

Agent exclusif pour la France

SMG Systems

F-77870 VULAINES S/Seine

Tel 01 64 23 69 88

Fax 01 60 74 23 22

www.smg-systems.fr



g. rabolini

IMPERIA hand-fed platen die-cutter



IMPERIA platen die-cutters, universally known for their strong power, are suitable for die-cutting, creasing and embossing works on flat, corrugated or laminated cardboard sheets.

With specific applications, the machines can carry out works of hot foil stamping and embossing, or of die-cutting by heating.

The hot die-cutting process is mainly useful in cutting plastic materials, through a special die-cutting process, to which the sealing step can be added.

The choices of materials and the technical ability utilized in the machines manufacture are extremely accurate, so IMPERIA platens guarantee high quality performances, long durability and easy use.

The whole product is fully "made in Italy", from the cast iron castings to the final platen, in FULL compliance with the most demanding European safety rules.

Precision finishing of the working planes.



The manual scraping, to which the two working tables are subjected, matched one to the other, assures the perfect flatness, with excellent cut quality.

Self-adjusting pneumatic clutch.



This kind of clutch offers the highest performances and does not require any maintenance.

Centralised automatic lubrication.



The lubrication of the mechanical parts is programmed, in regular intervals. An acoustic signal, warns when the pump oil tank must be topped up.

Universal chase. Mechanical or pneumatic.



It reduces to the minimum the time to be spent for machine make-ready, lightening the operator's workload.

Micrometric pressure adjustment.



It allows to subdivide the pressure adjustment in centesimal parts: very useful for kiss-cut works.

Safety logic blocks.



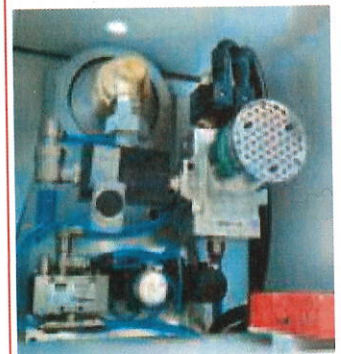
The logic blocks control the right working of the two safety channels, preventing unforeseen machine re-starts, or after power cut.

Safety protections. Safety stops.



These are placed to prevent any access into the machine parts and to guarantee the total operator protection, allowing the stop of the movable plane motion, at any time.

Double body electrovalve.



The double body device, guarantees the clutch stop in full safety, under any emergency condition.

Model	Imperia B	Imperia C	Imperia D	Imperia E	Imperia FS
Max. workable sheet size cm.	61x86	75x105	85x120	100x140	120x170
Moving platen size cm.	64x88	79x107	88x124	101x144	121x173
Working pressure Tons.	200	280	360	360	390
Mechanical speed. Strokes/hour	1.400	1.300	1.300	1.200	1.200
Adjustable mechanical speed with Converter unit (option)	900/1.500	900/1.500	900/1.500	900/1.500	800/1.300
Motor kW/hp	4/5.5	4/5.5	4/5.5	5.5/7.5	9/12,5
Total installed power kW-A	5-10	5-10	5-10	6-12	10-20
Compressed air pressure. Bar	5.5	5.5	5.5	5.5	5.5
Compressed air consumption (at each clutch insertion) 5.5 Bar	2.3 lt.	2.3 lt.	2.3 lt.	2.3 lt.	2.3 lt.
Machine weight Kg.	3.400	5.500	6.000	8.100	12.000
Machine dimensions (tables incl.)	200x330x225	203x365x248	205x385x248	225x395x258	266x440x275