

- researching
- developing
- upgrading

SOL-BOX

Automatic Feeder
For Flat Boxes



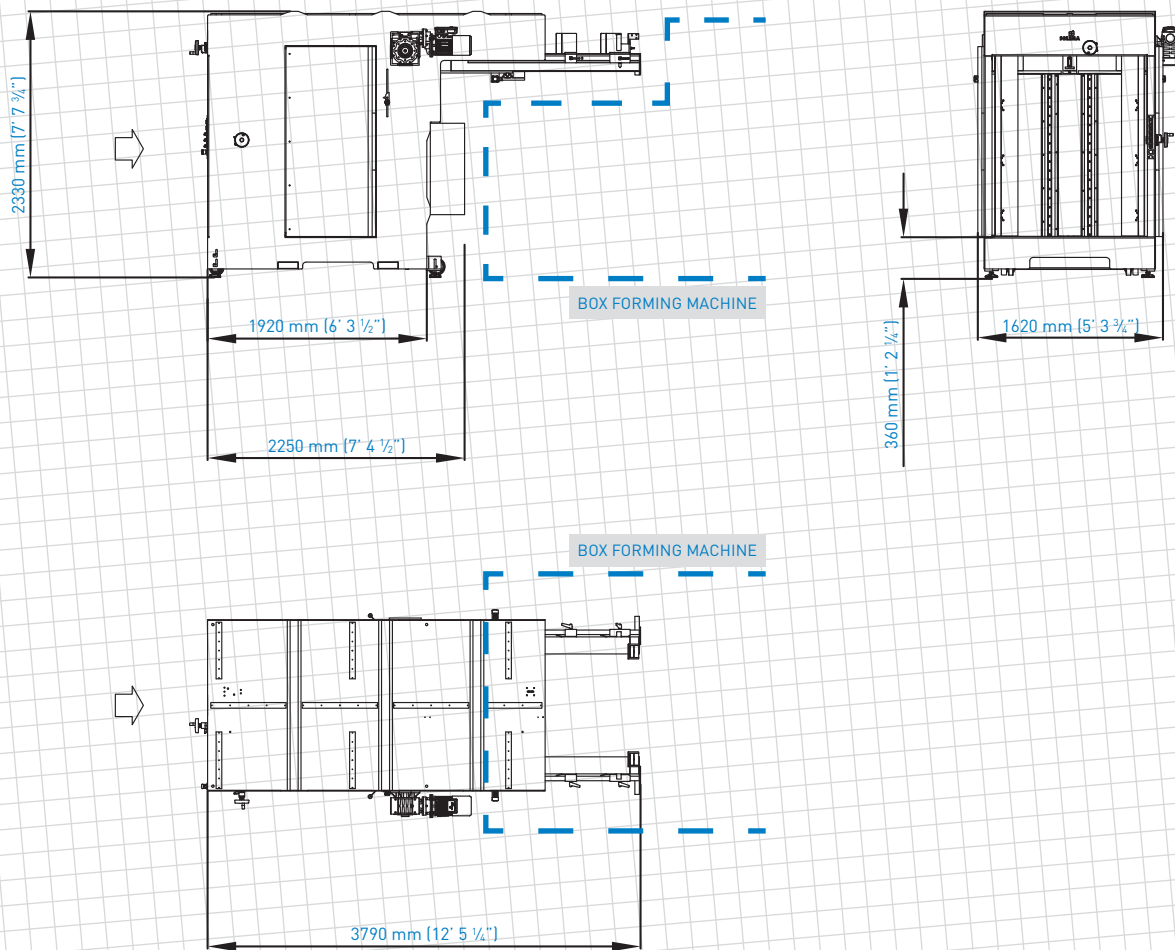
SOL-BOX feed allows optimum performances and set free the operator thanks to his buffer capacity of 2.8 meters of stacked flat boxes.

The machine is composed by a pile's waiting position, an elevator, a clamp / pusher system for separating the boxes and a grid system to drop the boxes into the hopper.

The feeding timing process is controlled by a photo-cell placed directly on the hopper of the cardboard box forming machine which is checking the level.

All adjustments of the automatic feeder are quickly carried out by means of a few easy accessible hand wheels with numeric scales.

SOL-BOX



■ total weight approx. 2200 kg (4850 lb)

TECHNICAL DETAILS

FLAT BOXES LENGHT

- min. 500 mm (19 3/4") — max. 1200 mm (47 1/4")

FLAT BOXES WIDTH

- min. 400 mm (15 3/4") — max. 900 mm (35 3/4")

PILE HEIGHT

- max. 1500 mm (59")

PILE HEIGHT PRE-LOAD

- min. 50 mm (2") — max. 300 mm (11 3/4")

ELECTRICAL REQUIREMENTS

- installed power: 5 kW
- electrical power supply: 3 × 400 V PE 50 Hz
- controls voltage: 24 V DC

PNEUMATIC SYSTEM

- compressed air running pressure: 6 bar (600 000 Pa)
- compressed air consumption: 80 NL/cycle

APPLIES TO

- all TECNO BOX machines
- all machines with similar hopper